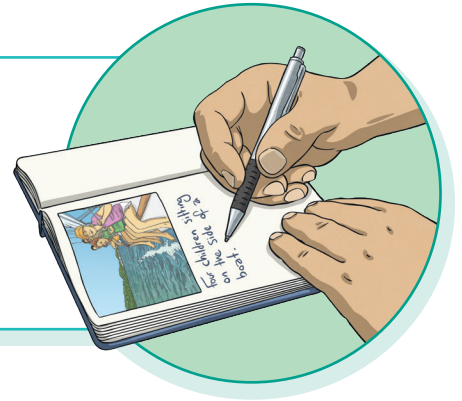


Writing Sentences Using Correlative Conjunctions

Correlative conjunctions are pairs of conjunctions that relate to and support each other in a sentence. They connect words and phrases that are equally important. They are a great way of adding more information to a sentence.



Create your own sentences using the provided conjunctions. Some examples have been used to help you.

I would **rather** play rugby at lunchtime **than** go on the playground.

rather/than

So, **not only** did my sister take my pencil case **but** she **also** broke my favourite rubber.

not only/but also

I wanted **neither** the sushi **nor** the curry, so Nan said I had to just make a sandwich.

neither/nor

both/and

either/or

no sooner/than
